

TOILET SEAT FASTENING SYSTEM

STEP ONE:

Hold metal channel flat alongside plastic straps & slide channel through the hole.

STEP TWO:

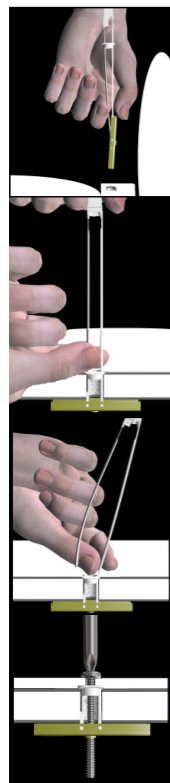
Hold ends of straps together between thumb & forefinger and pull toward you until channel rests behind wall. Ratchet cap along straps with other hand until flange of cap is flush with toilet seat.

STEP THREE:

Place thumb between straps at toilet seat. Push thumb side to side, snapping off straps level with flange of cap.

STEP FOUR:

Place item over flange. Insert bolt and tighten until snug against item, then stop. Use machine screw to match thread in metal channel.



HEAVY-DUTY SNAPTOGGLE®

BM6 304 Stainless

6mm thread, 12mm hole

RSL CODE: PANTOGSET

93 Ruffell Road, Te Rapa, Hamilton, 3288

PO Box 10-408, Te Rapa, Hamilton, 3241

T. 64 7 850 4200 • F. 64 7 850 4204

E. rsl@simplefix.co.nz

www.simplefix.co.nz

