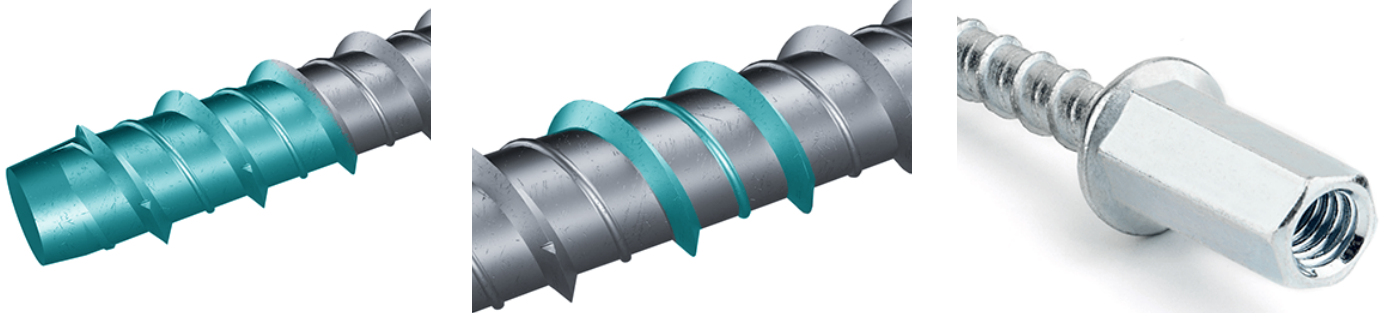


RSL Code	Description
SAMC6555	M8/10 Seismic Zinc Screw Bolt For Concrete 6mm x 55 (ea) Fire Rated
SAMC6555J/15	M8/10 Seismic Zinc Screw Bolt For Concrete 6mm x 55 (15) Fire Rated
SAMC6555/50	M8/10 Seismic Zinc Screw Bolt For Concrete 6mm x 55 (55) Fire Rated

**Design and Geometry**

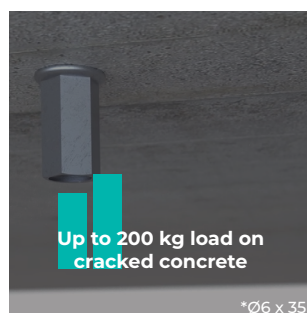


**Patented double thread**, optimised to guarantee maximum loads thanks to the design of a double thread that is embedded deep into the concrete.

The **tempered tip** ensures greater hardness, durability and ease of installation.

**TFF Head. Female thread with double M8/M10 thread**, for direct, quick and easy fastening of threaded rods in ceilings (concrete and hollow-core slabs). Suitable for suspension of air conditioning ducts, cable trays, pipe systems, etc.

**Maximum performance and greater load values**



Seismic and Fire rated according to ETA 20/0046 and ETA 20/0494